

E-TEST[®] IMIPENEM/ RELEBACTAM (0.002/4 - 32/4 µg/mL)

FDA 510(k) CLEARED

**For determining imipenem/relebactam MIC for
Enterobacteriaceae and *Pseudomonas aeruginosa***

- ®
- E
- IPR
- 32
- 24
- 16
- 12
- 8
- 6
- 4
- 3
- 3
- 2
- 1.5
- 1.0
- .75
- .50
- .38
- .25
- .19
- .125
- .094
- .064
- .047
- .032
- .023
- .016
- .012
- .008
- .006
- .004
- .003
- .002

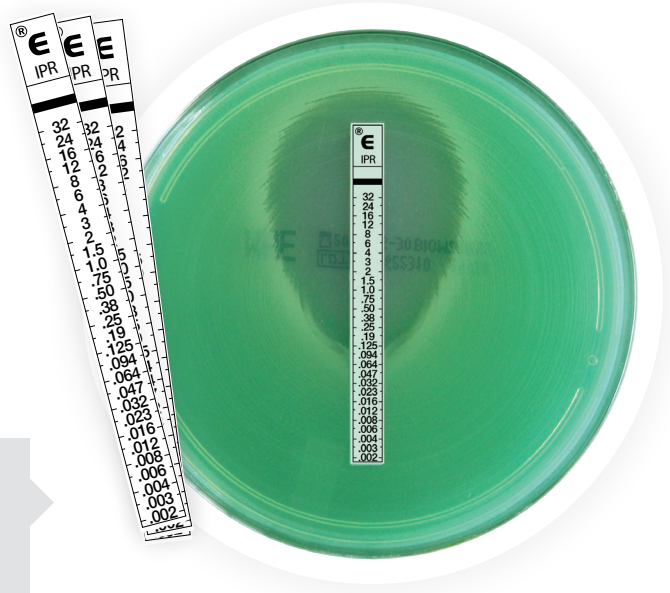
REF 420927 | Single pack | 30 Strips

Refer to www.mybiomerieux.com for technical information.

Organism	Strains	% Essential Agreement	% Category Agreement
	(N)	(EA)	(CA)
<i>Enterobacteriaceae</i>	477	95.8%	98.1%
<i>Pseudomonas aeruginosa</i>	175	96.0%	96.0%

Notes: EA = % of MIC values within ± 1 doubling dilution of the reference method.

E-TEST is a flexible and accurate AST solution used to determine the MIC of antibiotics and antifungal agents.





FOR EMERGING RESISTANCE

Keeping pace with antimicrobial resistance while ensuring top quality and performance is challenging. ETEST® provides a flexible diagnostic solution for multi-drug resistant organisms and helps clinicians guide and manage therapy.

Complete your AST pathway with these ETEST products:

Antibiotic	MIC Range (µg/mL)	REF (Package of 30)
CEFTAZIDIME/AVIBACTAM	0.016/4-256/4	419046
CEFTOLOZANE/TAZOBACTAM	0.016/4-256/4	414445
IMIPENEM/RELEBACTAM	0.002/4-32/4	420927
MEROPENEM/VABORBACTAM	0.004/8-64/8	421560

bioMérieux offers flexible testing solutions to confirm or detect emerging resistance:

REF	REF Description	ESBL	AmpC	MBL	Type of Test
532248/532240	Cefotaxime/Cefotaxime + Clavulanic Acid	Yes			Confirmation of ESBL
532540/532548	Ceftazidime/Ceftazidime + Clavulanic Acid	Yes			Confirmation of ESBL
534740/534748	Cefepime/Cefepime + Clavulanic Acid	Yes			For detection of ESBL – Research Use Only
537140	Cefotetan/Cefotetan + Cloxacillin		Yes		For detection of AmpC – Research Use Only
534240/534248	Imipenem/Imipenem + EDTA			Yes	For detection of Metallo Beta-Lactamase (MBL) – Research Use Only
411363	Meropenem/Meropenem + EDTA			Yes	For detection of Metallo Beta-Lactamase (MBL) in <i>Enterobacteriaceae</i> – Research Use Only

To place an order, visit

www.biomerieuxDIRECT.com

bioMérieux, Inc. offers a complete ID/AST solution with VITEK® MS, VITEK® 2, API®, RAPIDEK® CARBA NP and ETEST. To learn how the synergy of a complete ID/AST solution can provide efficient antibiotic susceptibility testing in your laboratory, please contact your local representative or visit www.biomerieux-usa.com/clinical/etest.