

# VIDASUP™

## Salmonella



VIDAS UP:  
Extremely simple & fast.  
Scan the code with  
your smart phone to  
find out more!

### General protocol

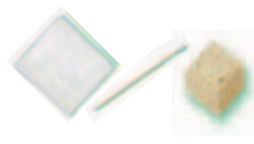
#### 1 Detection using VIDAS® SPT

Food products

Environmental samples

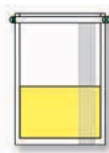


25 g or 25 ml



1:10 dilution

225 ml Buffered  
peptone water  
+ 1 ml of Salmonella  
supplement



0.5 ml

18-24 hrs / 41.5 ± 1°C



VIDAS® Heat & Go / 5 ± 1 min\*

Remove the strip and let it cool for 10 min



**VIDAS SPT**

Results within 48 minutes

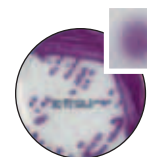
Test ⊖ < 0.25  
Absence of *Salmonella*

Test ⊕ 0.25  
**CONFIRMATION**

#### 2 Confirmation

Buffered peptone water

Isolation on a selective agar



Light pink  
colony  
to mauve

ChromID™ Salmonella  
24 hrs / 37 ± 1°C



API® 20 E, ID 32 E or VITEK® 2 GN

biochemical confirmation  
serological confirmation

#### Salmonella range

|        |                                 |             |
|--------|---------------------------------|-------------|
| 30 707 | VIDAS UP Salmonella (SPT)       | 60 tests    |
| 42 650 | Salmonella supplement           | 8 x 14 ml   |
| 42 043 | Buffered peptone water          | 6 x 225 ml  |
| 42 629 | Buffered peptone water          | 3 x 3 L     |
| 42 729 | Minibags Buffered peptone water | 10 x 225 ml |
| 43 621 | ChromID™ Salmonella             | 20 plates   |
| M1031  | XLD Agar                        | 10 plates   |
| 21341  | VITEK® 2 GN                     | 20 tests    |
| 20 100 | API® 20 E                       | 25 strips   |
| 32 400 | ID 32 E                         | 25 strips   |
| 93 554 | VIDAS Heat and Go               | 110 Volts   |

\* For additional  
sample details,  
please consult  
the product  
package insert.

# VIDAS<sup>UP</sup>™

## Salmonella



**VIDAS UP:**  
Extremely simple & fast.  
Scan the code with  
your smart phone to  
find out more!

375g General protocol

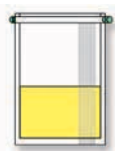
### 1 Detection using VIDAS<sup>®</sup> SPT

Food products  
(ground beef, produce, non fat dry milk, chocolate, pet food)



375g

1,125 ml Buffered  
peptone water  
+ 5 ml of Salmonella  
supplement



22-26 hrs / 41.5 ± 1°C

0.5 ml



VIDAS<sup>®</sup> Heat & Go / 5 ± 1 min\*

Remove the strip and let it cool for 10 min



**VIDAS SPT**

Results within 48 minutes

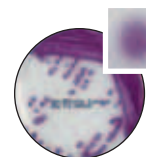
Test ⊖ < 0.25  
Absence of *Salmonella*

Test ⊕ 0.25  
**CONFIRMATION**

### 2 Confirmation

Buffered peptone water

Isolation on a selective agar



Light pink  
colony  
to mauve

ChromID™ Salmonella  
24 hrs / 37 ± 1°C



API<sup>®</sup> 20 E, ID 32 E or VITEK<sup>®</sup> 2 GN

biochemical confirmation  
serological confirmation

#### Salmonella range

|        |                                 |             |
|--------|---------------------------------|-------------|
| 30 707 | VIDAS UP Salmonella (SPT)       | 60 tests    |
| 42 650 | Salmonella supplement           | 8 x 14 ml   |
| 42 043 | Buffered peptone water          | 6 x 225 ml  |
| 42 629 | Buffered peptone water          | 3 x 3 L     |
| 42 729 | Minibags Buffered peptone water | 10 x 225 ml |
| 43 621 | ChromID™ Salmonella             | 20 plates   |
| M1031  | XLD Agar                        | 10 plates   |
| 21341  | VITEK <sup>®</sup> 2 GN         | 20 tests    |
| 20 100 | API <sup>®</sup> 20 E           | 25 strips   |
| 32 400 | ID 32 E                         | 25 strips   |
| 93 554 | VIDAS Heat and Go               | 110 Volts   |

\*For additional  
sample details,  
please consult  
the product  
package insert.

bioMérieux, Inc.  
595 Anglum Road  
Hazelwood, MO 63042  
U.S.A.  
Tel: (800) 634 7656  
Fax: (800) 657 3053

[www.biomerieux-usa.com/phage](http://www.biomerieux-usa.com/phage)

