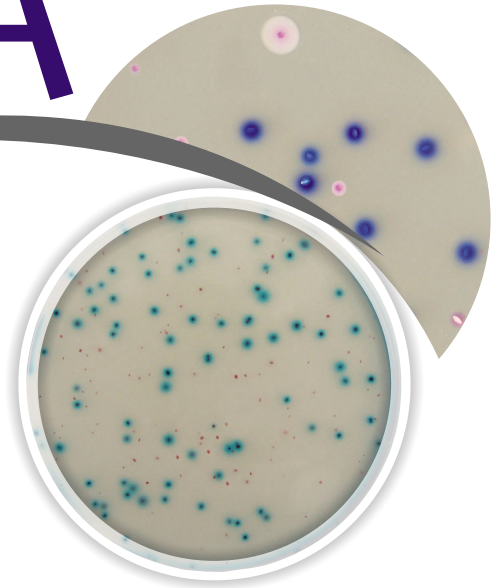


REBECCA™

Rapid Enterobacteriaceae Escherichia Coli Coliform Agar

Chromogenic medium for the direct enumeration

of *E. coli* and Enterobacteriaceae in food and water samples



Validated media

- AFNOR validated following ISO 16140 for both surface-inoculation and pour-plate methods
- Certificate number: AES 10/06-01/08

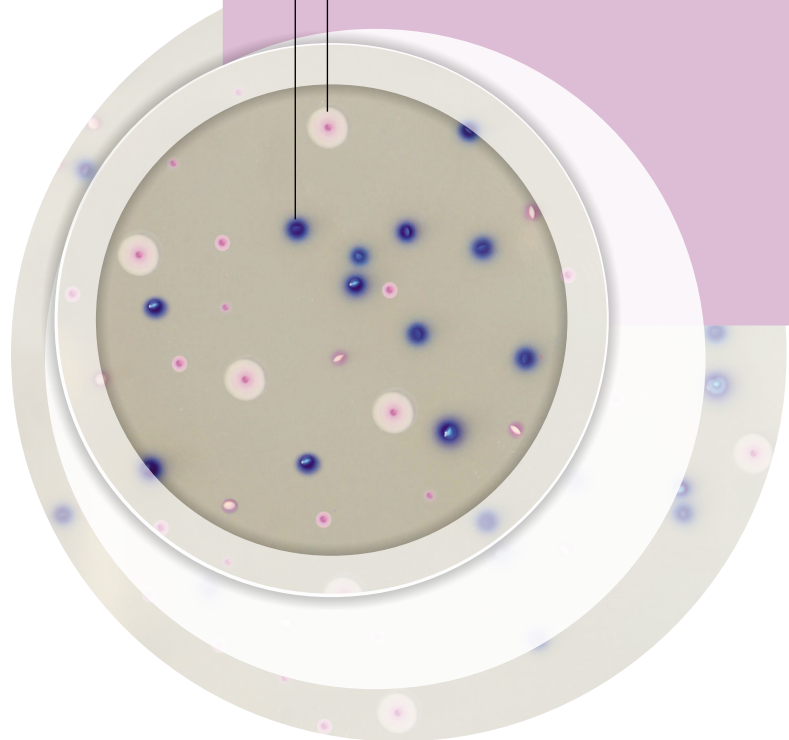
Flexible media (2 in one)

- Two methods:
 - For enumeration of *E. coli* using REBECCA Base
 - For enumeration of *E. coli* and Enterobacteriaceae using REBECCA Base + EB Supplement

Easy-to-use

- Results within 24 ± 2 hours at $37 \pm 1^\circ\text{C}$
- Easy-to-read: blue colonies on clear agar for *E. coli*, pink-to-red colonies for other Enterobacteriaceae

E. coli: blue colonies
Other Enterobacteriaceae:
pink-to-red colonies



REBECCA™

Rapid Enterobacteriaceae Escherichia Coli Coliform Agar



Procedure and interpretation guide

	Enumeration of <i>E. coli</i>	Enumeration of <i>E. coli</i> + Enterobacteriaceae
MEDIUM	REBECCA Agar Base	REBECCA Agar Base*
SUPPLEMENT TO ADD TO REBECCA (BASE)	None	REBECCA EB supplement*
INOCULATION	See Package insert	
INCUBATION	24 ± 2 hours at 37 ± 1°C	
INTERPRETATION	<ul style="list-style-type: none"> <i>E. coli</i>: Blue colonies with or without halo 	<ul style="list-style-type: none"> <i>E. coli</i>: Blue colonies with or without halo Other Enterobacteriaceae (non <i>E. coli</i>): Pink-to-red colonies
ENUMERATION	<ul style="list-style-type: none"> <i>E. coli</i>: Blue colonies 	<ul style="list-style-type: none"> <i>E. coli</i>: Blue colonies Total Enterobacteriaceae: Blue colonies + pink-to-red colonies

*REBECCA EB Media (REBECCA Agar Base + REBECCA EB Supplement) is available in ready-to-use plates for surface-inoculation

Ordering Information

• REBECCA Media

REBECCA Agar Base - Dehydrated

500g Ref. AEB150022

REBECCA EB Media

20 plates 90mm Ref. AEB520020

REBECCA Base

6 x 200ml bottles Ref. AEB620027

REBECCA EB Supplement 10 QSP

1.2L bottle Ref. AEB184135/10

Buffered Peptone Water

500g Ref. 46925

100 x 9ml tubes Ref. 42111

6 x 90ml bottles Ref. 42042

6 x 225ml bottles Ref. 42043

10 x 225ml Minibags Ref. 42729

3 x 3L bags Ref. 42629

Tryptone Salt Broth (0.1% Peptone Water)

6 x 90ml bottles Ref. AEB611494

4 x 3L Dilubag Ref. AEB911493/4

2 x 5L Dilubag Ref. AEB911495/2

bioMérieux Industry

595 Anglum Road
Hazelwood, MO 63042 • U.S.A.

Tel: (800) 634 7656

Fax: (314) 731 8678

www.biomérieux-usa.com

bioMérieux Canada, Inc.

7815 Henri-Bourassa Boulevard West
St. Laurent (Québec) • Canada H4S 1P7

Tel: (1) 514 336 7321

Fax: (1) 514 807 0015

